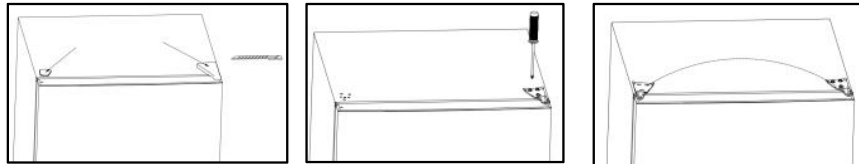


REVERSE DOOR

Tool required: Philips screwdriver, Flat bladed screwdriver, Hexagonal spanner.

- Ensure the unit is unplugged and empty.
- To take the door off, it is necessary to tilt the unit backwards. You should rest the unit on something solid so that it will not slip during the door reversing process.
- All parts removed must be saved to do the reinstallation of the door.
- Do not lay the unit flat as this may damage the coolant system.
- It's better that 2 people handle the unit during assembly.

- ① Remove four screws in top cover and then lift it.
- ② Unscrew top hinge and then remove upper door and place it on a soft pad to avoid scratch.
- ③ Remove the pin with a screwdriver and flip the hinge bracket. Then refit the pin to hinge bracket.

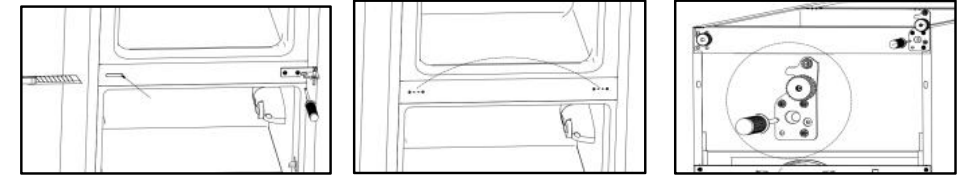


①

②

③

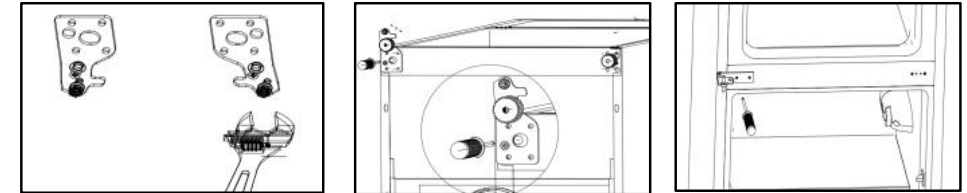
- ④ Unscrew middle hinge. Then lift lower door and place it on a soft pad to avoid scratch.
- ⑤ Move the hinge hole covers from left side to right side.
- ⑥ Unscrew bottom hinge. Then remove the adjustable feet from both side.
- ⑦ Unscrew and remove the bottom hinge pin, turn the bracket over and replace it.
- ⑧ Refit the bracket fitting the bottom hinge pin. Replace both adjustable feet. Transfer the lower door to the property position.



④

⑤

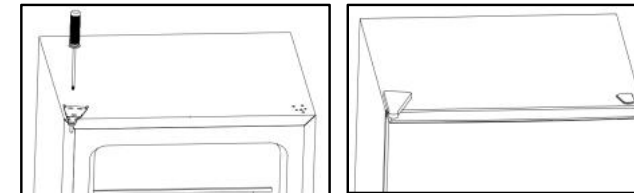
⑥



⑦

⑧

⑨



⑩

⑪

- ⑨ Make the middle hinge reverse the direction)180oC, then transfer it to the left property position. Make the middle hinge pin in the upper hole of the lower door, then tight the bolts.
- ⑩ Place the upper door back on. Ensure the door is aligned horizontally and vertically so that the seal are closed on all sides before finally tightening the top hinge. Then inert the hinge and screw it to the top of the unit.
- ⑪ Put the top cover and then screw back.